

## QUESTIONS

### Questions sheet 1

1. What is the meaning of the abbreviation

A.I.A.A.

Is it

- a) Aircraft in alternate altitudes
- b) Airfield in A class airspace
- c) Areas of intense aerial activity
- d) Aircraft in airfield areas

2. What is the meaning of the abbreviation

- a) A T Z
- b) M A T Z
- c) I F R
- d) C.A.V.O.K.

3. Define "Night"

- a) Sunset to Sunrise
- b) 1 hour before sunset 1 hour before sunrise
- c) ½ an hour before sunrise ½ an hour after sunset
- d) Sunrise but ½ an hour after sunset.

4) What colour denotes royal flight air space

- a) Red
- b) Purple
- c) Blue
- d) Gold

5. What time separation is given to royal flights

- a) 15 minutes before 30minutes after.
- b) 20 minutes before 30minutes after.
- c) 10 minutes before 30minutes after.
- d) 10 minutes before 20minutes after.

6. What does a green flare mean when flying over an active danger area.

- a) Go straight ahead
- b) Get out
- c) Land a.s.a.p.
- d) Gain height to clear.

Sheet 2

7. What is the maximum height you can tow launch to without a permit.

- a) 2,000ft / 600m
- b) 1,000ft / 300m
- c) 200 ft / 60m
- d) Any height.

8. What is the maximum tow height with a C.A.A. permit

- a) 3,000ft / 900m
- b) Any Height
- c) 1,000ft / 300m
- d) 2,000ft / 600m

9. If two aircraft are well separated but on a collision course, the aircraft with the other on it's **right** should

- A give way by turning right
- B give way by turning left
- C maintain it's course and speed
- D climb

10. If two aircraft are well separated but on a collision course, the aircraft with the other on it's **left** should

- A give way by turning right
- B give way by turning left
- C maintain it's course and speed
- D climb

11. A flying machine (must/must not) give way to a glider

12. A glider ( does/ doesnot ) have the right of way over a flying machine

13. A glider ( does/ doesnot ) have right of way over a balloon

14. When following a line feature keep it on the ( left/right)

15. When following a line feature keep to the (left right) of it

16.NO aircraft shall fly within (1000 / 2000 / 3000) meters of a gathering of ( 1000 / 2000 / 3000) people

17.An aircraft must not fly within .....ft of any person vessel, vehicle or structure.

18.As height is gained, atmospheric pressure ( increases / decreases / stays the same)

19.Atmospheric pressure at a given place (Does / does not) change from time to time

20.To measure the atmospheric pressure above mean sea level we use ( QFE , QNH, 1013)

21.A flight level FL35 is .....ft above sea level

22.An altitude of 24,500ft is FL.....

23.Airspace is catergorised as either un..... or c.....

24.The term ATZ is an abbreviation for.....

25.Describe the dimensions of an ATZ

Sheet3

26. The term MATZ is an abbreviation for.....

27. Describe the dimensions of a MATZ.....

28. A MATZ (does / doesnot ) contain an ATZ

29. The area around certain aerodromes from ground level to a specified altitude within which an Air Traffic Control service is provided to all flights is called

- a) a control zone
- b) a terminal control area
- c) a aerodrome traffic zone.

30. A control zone is abbreviated as.....and extends from.....to a specific altitude or flight level

31. A control area is abbreviated as ..... and extends upwards from a specified..... Or.....

32. An area in which flight is prohibited is called a .....area

33. A section of airspace designated as D703/15 is a .....area to .....ft amsl

34. Winch launch gliders may carry a cable up to a height of.....(agl/amsl) or more before release

35. Civil pilots (are / arenot) permitted in AIAA's which are A.....I.....A.....A.....

36. Royal flight are conducted where possible in controlled airspace if this is not possible then temporary controlled airspace known as .....airspace is established along the route. Details (are / arenot) promulgated by NOTAM.

37. Conditions in which flight is possible under VFR, the visual flight rules are known as V.....M.....C.....

38. Class A airspace ( is / isnot) available to VFR flight

39. Most VFR flights in the UK controlled airspace occur in Class..... and Class..... Airspace

40. For VFR flight above FL100 the VFR minima are:

visibility.....Km

Horizontal distance from cloud of.....metres

A vertical distance from cloud of.....ft

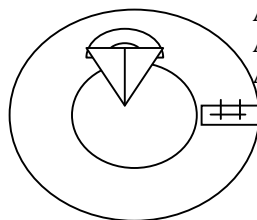
41. The emergency service VHF radio communication frequency 121.5MHz should be used only for

- a) Emergency calls
- b) Distress calls
- c) Requests for assistance
- d) All the above

42. What is a notam

Symbols

43.



A disused airfield with glider activity

A civil airfield with parachuting and winch cable activity

A civil airfield with microlighting & paragliding

A military airfield with winch cable and parachuting

Sheet 4

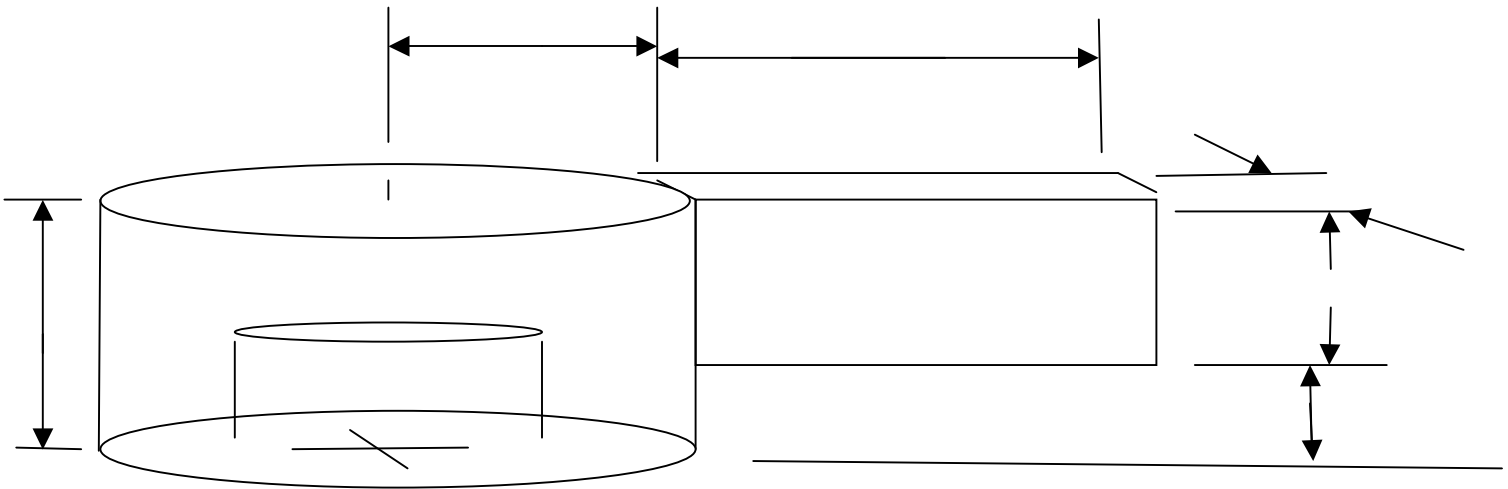
44. What is the meaning of the term H.I.R.T.A.?

45. What is the map symbol for a H.I.R.T.A. ?

**46. MILITARY AIR TRAFFIC ZONES**

This is the layout of a typical MATZ with a single pan handle fill in the missing figures.

One way of remembering the various heights is 5 5 4 3 2 1

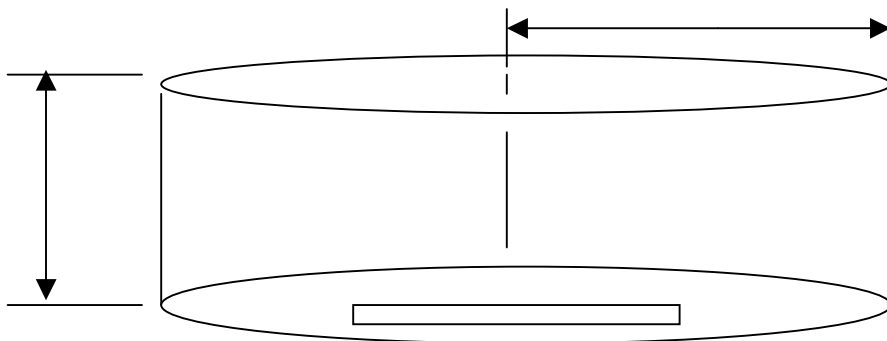


47. A.T.Z. =

48. Areas belonging to smaller aerodromes, from ground level to ..... ft within a radius of ..... nautical miles of a runway.

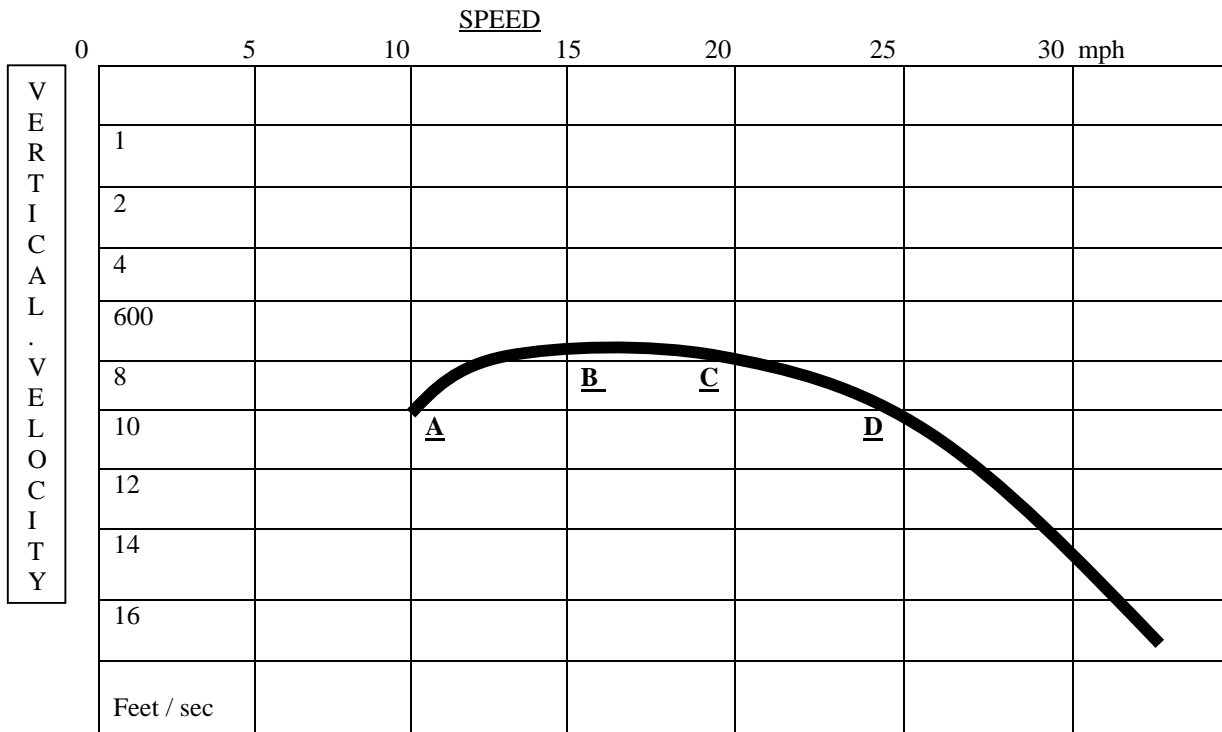
If the runway is over ..... metres then the radius is ..... NM

Fill in the diagram for an airfield with a runway length of 1000metres



Sheet5

49. Polar Curve



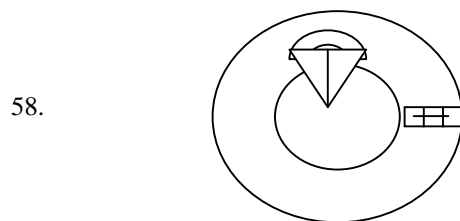
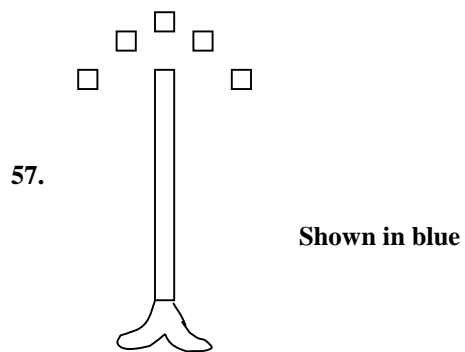
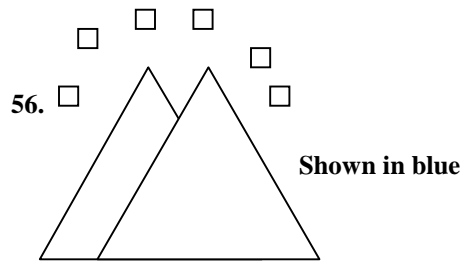
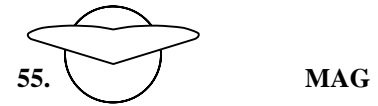
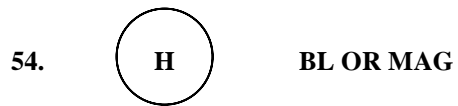
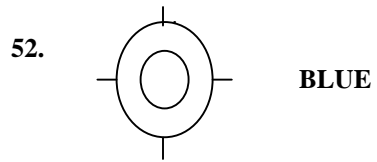
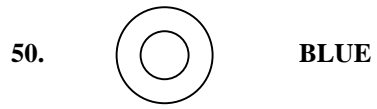
**A** = stall point

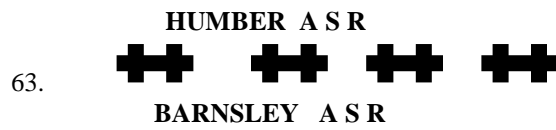
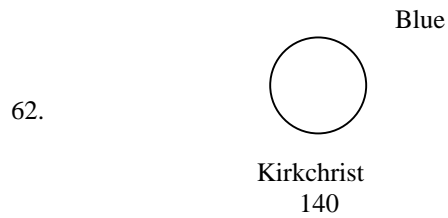
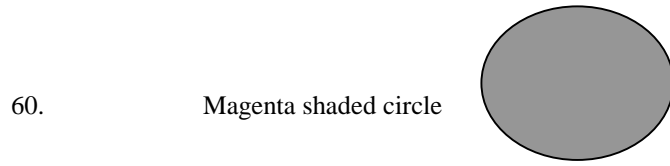
**B** = minimum sink \_\_\_ fpm @ \_\_\_ mph

**C** = max glide at \_\_\_ mph @ 700 fpm sink

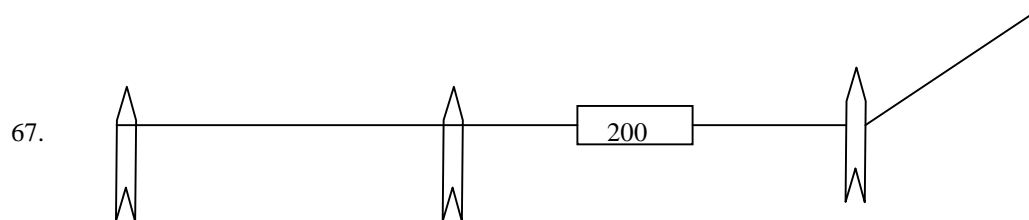
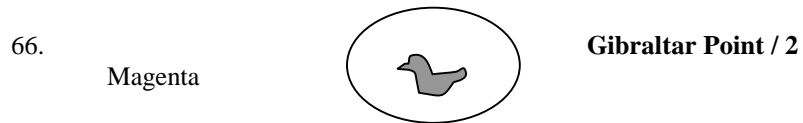
**D** = best speed to fly with a 15mph headwind = \_\_\_ mph

Sheet6 Symbols





BLUE or MAGENTA



Sheet 8

68. Name the 4 families of cloud

69. Lumpy heaped cloud belong to the .....family

70. Extensive layers of cloud belong to the .....family

71. Dense white clouds like cauliflower and showers falling are called .....

72. Heavy dense cloud associated with thunder and lightening are called .....

73. As water vapour condenses to form cloud it (absorbs/gives off) latent heat

74. Warm air can hold (less/more/ the same ) amount of water vapour compared to cold air

# Questions Questions

By Les Cowling